

## 1 INJECTION. 72 HOURS OF CLINICAL ANALGESIA.

### FDA-indexed extended-release buprenorphine. Made in a CGMP-regulated facility.

- **Extended-release pain management**—a reliable option for a significant need
- **Safeguards animal welfare**—conforms to medical research
- **Accurate dosing**—for research on both small surgeries and needles
- **Simple dosing**—available through conventional needle syringes

### Pharmaceutical grade, indexed by FDA.

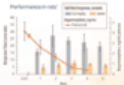
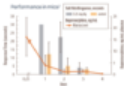
- **Confidence**—FDA indexed for use in research
- **Quality**—produced under FDA's strict Current Good Manufacturing Practices (CGMP)
- **Compliance**—comports with oversight agency directives

**"Investigators are expected to use pharmaceutical-grade medications whenever they are available."<sup>1</sup>**

<sup>1</sup>Office of Laboratory Animal Welfare, National Institutes of Health

### Long acting technology. Extended-release pain relief.

- **Control**—manages risk of medication-associated analgesia
- **Efficiency**—increases animal subject handling
- **Convenience**—decreases animal trial burden
- **User-friendly**—for dosing formulation



An extended-release formulation from

**Fidelis**  
PHARMACEUTICALS

Please see Important Safety Information and Boxed Warning on reverse and accompanying Prescribing Information.